



issa

EXCELLENCE IN SOCIAL SECURITY

State social insurance fund: closer to people

Kristina Zitikyte, Advisor, Division of Statistics, analysis and forecasting
State social insurance fund board of the Republic of Lithuania under the Ministry of
Social Security and Labour, Lithuania

**IEN Technical Seminar: Social security and human rights –
Ensuring access and combatting the non-take-up of social benefits**

8–9 June 2023, Belval, Luxembourg



issa

EXCELLENCE IN SOCIAL SECURITY

State social insurance fund: closer to people

Kristina Zitikytė, Advisor, Division of Statistics, analysis and forecasting

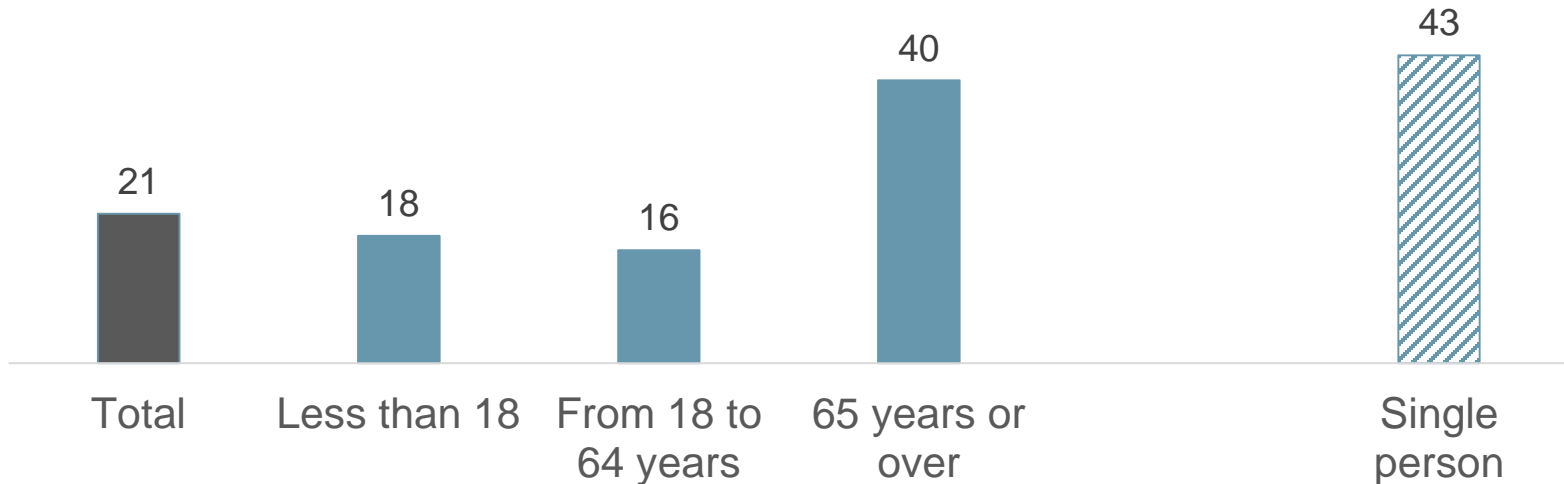
State social insurance fund board of the Republic of Lithuania under the Ministry of Social Security and Labour, Lithuania

IEN Technical Seminar: Social security and human rights – Ensuring access and combatting the non-take-up of social benefits

Belval, Luxembourg, 8-9 June 2023

Poverty is a particularly acute problem among older and single persons

At-risk-of-poverty rate by age groups (%)



Data: 2022

Single person's benefit (since 1st of July, 2021)

230.000

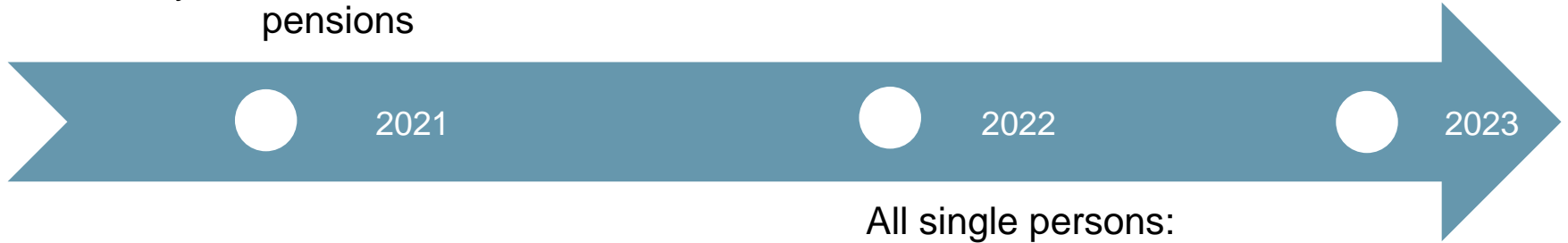
the number of beneficiaries

- This is a payment for all single people living in Lithuania:
 - old-age pensioners,
 - the disabled.



Step by step – 2 stages

Receivers of old-age allowance,
disability allowance and the lowest
pensions

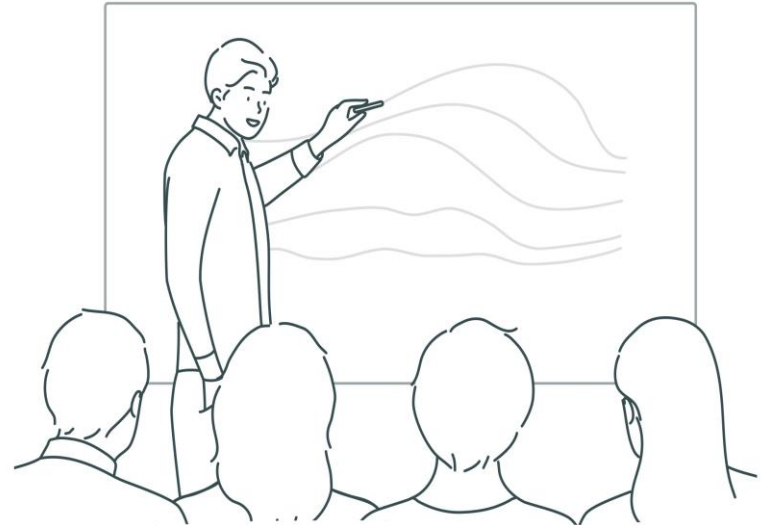


All single persons:
with a work capacity of 55 percent
or less or who have reached the
prescribed old-age pension age;
and have declared their place of
residence in Lithuania

Before: less than half of the original 60,000 people who were entitled to this benefit, applied

You must:

- know that such a benefit exists and belongs to you;
- write an application to receive the payment;
- be able to use electronic services.



But the result was not what we dreamed off!

What mountains we rolled down?

We had 4 months:

To assign benefits and pay them out

To contact people whose data raised doubts

To collect the necessary data
from different population registers

To develop new software

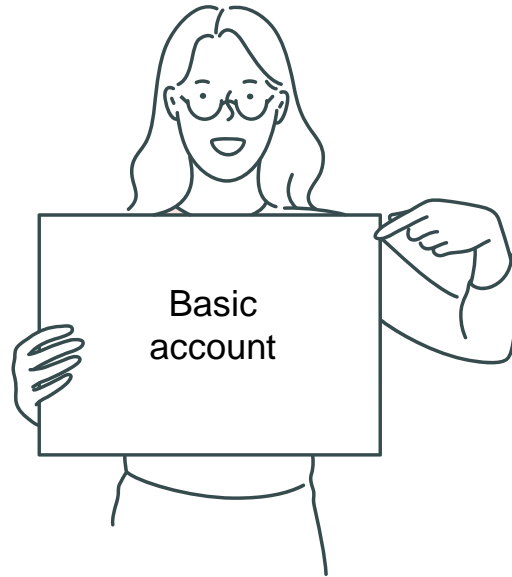
After: single person's benefit finds you by itself

- A person receives the payment automatically
- he/she does not need to fill out an application, data on marital status is obtained from the Population Register.



What is next?

Accounts are changed,
and public sector
institutions
collect, accumulate,
refine **TENS OF
THOUSANDS**
account data
separately.

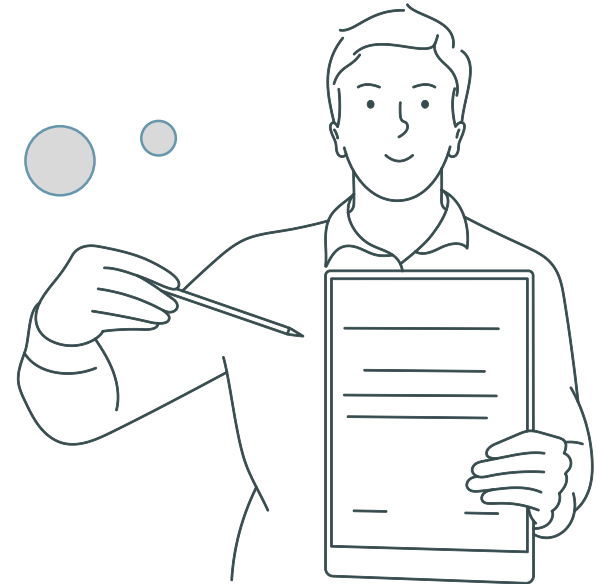


60
types of benefits

more than
1,000,000
beneficiaries

In the future: even closer to people

The authorities would know that all payments should be transferred to one basic account.





issa

EXCELLENCE IN SOCIAL SECURITY

Q & A



issa

EXCELLENCE IN SOCIAL SECURITY

www.issa.int



@ISSACOMM