



issa

EXCELLENCE IN SOCIAL SECURITY

Measuring the non-take-up of social benefits : some results and outlooks

Antoine Rode, Research fellow

Observatory of non-take-up to rights and services (ODENORE)

PACTE social science laboratory, Grenoble Alpes University (France)

**IEN Technical Seminar: Social security and human rights –
Ensuring access and combatting the non-take-up of social benefits**

8–9 June 2023, Belval, Luxembourg

Overview of the main study

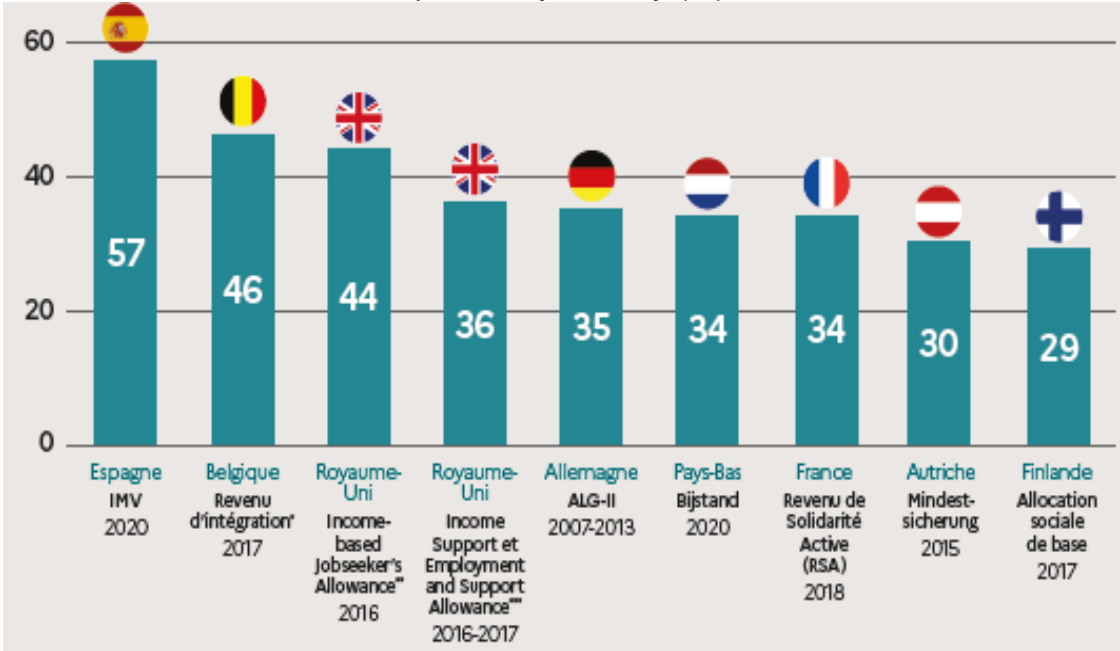
- **An original study on five European countries**
- **Four aims :**
 - Present the main minimum income non-take-up rates in the studied countries
 - Identify data-producing operators
 - Compare the methods used
 - Analyzing the uses of non-take-up data
- **A method based on a literature review and interviews with researchers and government departments**

Multiple convergences in the quantification of non-take-up

- **Contexts and institutional reforms that promote common interest in the issue of non-take-up**
- **Two main operators produce statistics on non-take-up :**
 - Public statistics
 - Academic researchers
- **Convergence in the methods used to measure non-take-up and in the analysis of the determinants of the phenomenon**

In Europe : Non-take-up, a widespread and persistent phenomenon

Minimum income non-take-up rates by country (%)



At national level : The example of the RSA in France



34% of non-take-up

20% of households in permanent non-take-up



600 000 households concerned each three-months period



Around 3 billion euros not allocated per year

Reference : Hannafi, Le Gall, Omalek, Marc, 2022

At local level : The example of “non-take-up barometers”

- Partnership-based observation
- Building local knowledge on non-take-up, useful for action
- Identifying populations with specific issues, such as :
 - Young people and the elderly
 - Singles and single-parent families
 - The poorest people, with the most cumulative difficulties
 - People in employment or close to it

Conclusion

- **Non-take-up statistics used more as a “tool of proof” than as a “tool of government”**
- **Complementarity of observation scales, disciplinary approaches and methods for :**
 - Reaching publics invisible to official statistics
 - Documenting all dimensions of non-take-up, including time-related dimensions
 - Addressing the causes and consequences of non-take-up
 - Examining both the accessibility of social services and their acceptability, from the point of view of recipients



issa

EXCELLENCE IN SOCIAL SECURITY

www.issa.int



@ISSACOMM